

# V2200

## Imaging Wheel Alignment Systems



High-resolution imaging technology delivers speed and accuracy

# JohnBean

**V2200**

# HIGHLY ACCURATE WHEEL ALIGNMENT SYSTEMS

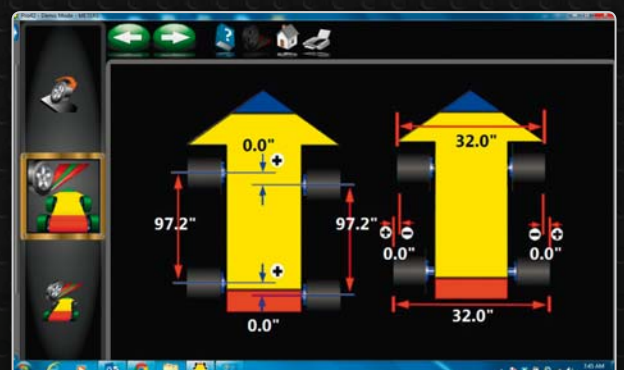
## VERSATILE, ACCURATE HARDWARE

- High-resolution cameras produce accurate, live alignment readings and diagnostic data
- Passive front and rear XD targets improve durability with no electronics to damage
- Advanced XD targets and AC100 clamps are lightweight, durable and impact resistant

## STANDARD DIMENSIONING AND PRODUCTIVITY FEATURES

- Vehicle track width and wheel base
- Individual wheel side set and set-back
- EZ-TOE\* for adjusting without using the steering wheel holder
- Guided adjustments of single tie rod, drag link and cradle

\*Patented and / or patent-pending features

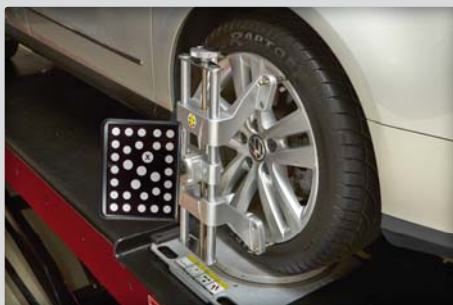


## THE V2200 WHEEL ALIGNMENT SYSTEM PROVIDES CORE FEATURES FOR THE ALIGNMENT PROFESSIONAL

Patented imaging technology provides accurate and real-time measurements that improves productivity. User-friendly features such as EZ-TOE\*, VODI\* and an extensive vehicle specification database delivers customer satisfaction, ease of use and accuracy.



## AC100 UNIVERSAL WHEEL CLAMPS



### FAST AND EASY TO USE

- Self-centring design for accurate measurement of vehicle dimensions
- Two-sided claws eliminate accessories and allow reliable clamping even over hub caps
- Accessories available to accommodate larger wheels

### RIDE HEIGHT\* MEASUREMENT

Manual ride height to obtain proper alignment specs for those vehicles requiring it

### EZ-TOE\*

Turn the front wheels and access difficult adjustment points while still displaying centred toe readings

### USER-FRIENDLY INTERFACE

Use available step-by-step instructions as a guide for completing even the most complex tasks

### MANUFACTURER SPECS

Extensive OEM specs allow quick and accurate vehicle selection

### VODI™

Vehicle Orientation Directional Indicator\* – guides the technician through the measurement process

### HELP VIDEOS

View detailed videos of how to make needed adjustments to complete even the most complex task

\*Patented and / or patent-pending features

# JohnBean



# PRODUCT FEATURES & SPECIFICATIONS

## OPTIONAL ACCESSORIES

- Drive-on camera aid: EAK0289J91A
- Hub adaptor kit for wheels-off alignment: 29215
- AC100 universal wheel clamp extension kit: 30926
- Dual tall support kit: EAK0289J80A
- Centre tall support kit: 4031236
- Dual short support kit: EAK0289J81A
- Centre short support kit: 4031234
- Tilt camera beam: 4031154
- TIP target: 4028515



## SPECIFICATIONS

- Wheel size:  
11" – 22" (27.94 cm – 55.88 cm)
- Track width:  
48" – 96" (122 cm – 244 cm)
- Wheel Base:  
79" – 180" (201 cm – 457 cm)
- Shipping weights:  
501 lbs (227 kg)
- Power requirements:  
120/230V 1Ph 50/60Hz

## AC100 SPECIFICATIONS

- Weight:  
4.9 – 5.2 kg (10.9 – 11.5 lbs)
- Construction:  
Cast aluminium

## STANDARD ACCESSORIES

- Wheel clamps & targets
- Steering wheel holder
- Brake pedal depressor
- Two wheel chocks
- Printer

### EMEA-JA

Snap-on Equipment s.r.l. - Via Prov. Carpi, 33 - 42015 Correggio (RE)  
Phone: +39 0522 733-411 - Fax: +39 0522 733-479 - [www.johnbean-europe.com](http://www.johnbean-europe.com)

### France

Snap-on Equipment France - ZA du Vert Galant - 15, rue de la Guivermone BP 97175  
Saint-Ouen-l'Aumône - 95056 Cergy-Pontoise CEDEX  
Phone: +33 134 48 58-78 - Fax: +33 134 48 58-70 - [www.johnbean-france.fr](http://www.johnbean-france.fr)

### Germany

Snap-on Equipment GmbH - Konrad-Zuse-Straße 1 - 84579 Unterneukirchen  
Phone: +49 8634 622-0 - Fax: +49 8634 5501 - [www.johnbean-deutschland.com](http://www.johnbean-deutschland.com)

### Italy

Snap-on Equipment s.r.l. - Via Prov. Carpi, 33 - 42015 Correggio (RE)  
Phone: +39 0522 733-411 - Fax: +39 0522 733-410  
[www.johnbean-italia.com](http://www.johnbean-italia.com)

### United Kingdom

Snap-on Equipment Ltd. - Unit 17 Denney Road, King's Lynn - Norfolk PE30 4HG  
Phone: +44 118 929-6811 - Fax: +44 118 966-4369  
[www.snapon-equipment.co.uk](http://www.snapon-equipment.co.uk)

