



ACEA

Association des
Constructeurs
Européens
d'Automobiles

Press Release

**PRESS EMBARGO FOR ALL DATA :
8.00 A.M.(6.00 A.M GMT), July 16, 2013**

Av. des Nerviens 85
B-1040 Bruxelles
Tel (32 2) 732 55 50
Fax (32 2) 738 73 10
(32 2) 738 73 11

PROVISIONAL NEW PASSENGER CAR REGISTRATIONS BY MARKET EUROPEAN UNION*

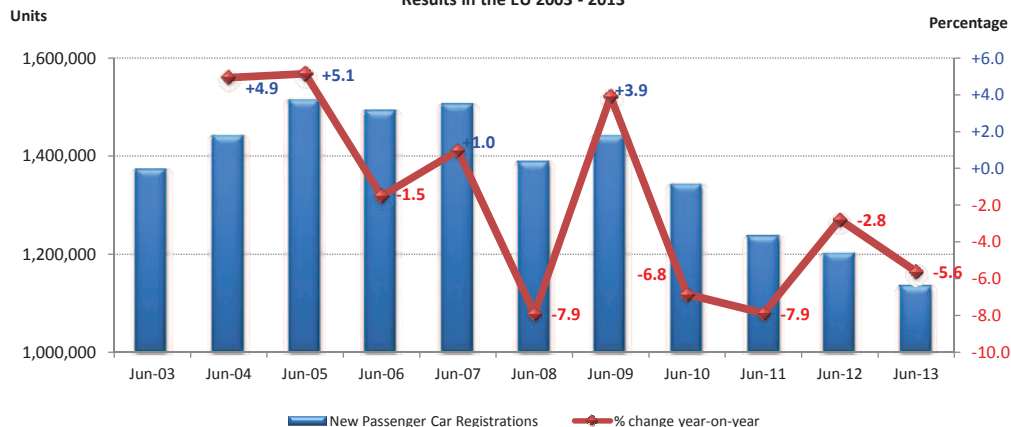
16/7/13

	June '13	June '12	% Chg 13/12	Jan - Jun '13	Jan - Jun '12	% Chg 13/12
AUSTRIA	31,279	33,068	-5.4	171,204	186,958	-8.4
BELGIUM	43,158	47,647	-9.4	289,873	285,116	+1.7
BULGARIA	1,944	2,135	-8.9	8,971	9,770	-8.2
CYPRUS	616	978	-37.0	3,679	6,426	-42.7
CZECH REPUBLIC	14,482	18,140	-20.2	80,818	94,233	-14.2
DENMARK	17,550	14,727	+19.2	91,959	84,333	+9.0
ESTONIA	1,694	1,642	+3.2	10,282	8,923	+15.2
FINLAND	8,809	7,723	+14.1	56,548	66,934	-15.5
FRANCE	191,355	208,909	-8.4	931,476	1,048,982	-11.2
GERMANY	282,913	296,722	-4.7	1,502,630	1,634,401	-8.1
GREECE	5,648	5,527	+2.2	30,364	32,431	-6.4
HUNGARY	4,975	4,956	+0.4	27,160	27,785	-2.2
IRELAND	1,673	6,352	-73.7	53,230	66,718	-20.2
ITALY	122,008	129,118	-5.5	731,203	815,213	-10.3
LATVIA	1,027	1,050	-2.2	5,137	5,462	-6.0
LITHUANIA	1,121	1,048	+7.0	6,007	6,202	-3.1
LUXEMBURG	4,320	4,939	-12.5	26,409	28,656	-7.8
NETHERLANDS	35,285	76,118	-53.6	211,910	331,358	-36.0
POLAND	25,203	23,329	+8.0	147,487	148,710	-0.8
PORTUGAL	12,706	10,803	+17.6	54,945	53,375	+2.9
ROMANIA	3,967	7,326	-45.9	24,549	33,343	-26.4
SLOVAKIA	5,872	5,976	-1.7	32,044	34,316	-6.6
SLOVENIA	5,845	4,980	+17.4	28,229	28,327	-0.3
SPAIN	72,766	73,259	-0.7	386,353	406,071	-4.9
SWEDEN	22,869	25,562	-10.5	128,900	142,633	-9.6
UNITED KINGDOM	214,957	189,514	+13.4	1,163,623	1,057,680	+10.0
EUROPEAN UNION (EU27)*	1,134,042	1,201,548	-5.6	6,204,990	6,644,356	-6.6
EU15	1,067,296	1,129,988	-5.5	5,830,627	6,240,859	-6.6
EU11*	66,746	71,560	-6.7	374,363	403,497	-7.2
ICELAND	1,468	1,516	-3.2	4,804	4,854	-1.0
NORWAY	10,948	11,053	-0.9	70,644	69,355	+1.9
SWITZERLAND	28,905	39,905	-27.6	156,305	177,310	-11.8
EFTA	41,321	52,474	-21.3	231,753	251,519	-7.9
EU27*+EFTA	1,175,363	1,254,022	-6.3	6,436,743	6,895,875	-6.7
EU15+EFTA	1,108,617	1,182,462	-6.2	6,062,380	6,492,378	-6.6

(* data for Malta currently not available.

For further information, please contact: Ms. Quynh-Nhu Huynh - Director Economics & Statistics - E-mail: qh@acea.be - Tel. (32) 2 738 73 55

New Passenger Car Registrations in June
Results in the EU 2003 - 2013



Next press release: Tuesday, September 17, 2013

This information is available on the ACEA website: <http://www.acea.be>

P r e s s R e l e a s e

P R O V I S I O N A L

NEW PASSENGER CAR REGISTRATIONS BY MANUFACTURER

EU* + EFTA Countries

16/7/13

	June					January - Jun				
	%Share		Units	Units	% Chg	%Share		Units	Units	% Chg
	'13	'12	'13	'12	13/12	'13	'12	'13	'12	13/12
ALL BRANDS**			1,175,363	1,254,022	-6.3			6,436,743	6,895,875	-6.7
VW Group	24.4	23.9	286,904	300,058	-4.4	24.8	24.1	1,598,768	1,659,780	-3.7
VOLKSWAGEN	12.3	12.4	144,926	155,187	-6.6	12.5	12.7	805,745	872,609	-7.7
AUDI	5.4	5.6	63,565	69,784	-8.9	5.7	5.5	363,997	377,781	-3.6
SEAT	2.4	2.0	27,767	25,086	+10.7	2.4	2.0	151,836	138,747	+9.4
SKODA	3.9	4.0	46,302	49,732	-6.9	3.9	3.9	251,899	269,140	-6.4
Others (1)	0.4	0.0	4,344	269	+1514.9	0.4	0.0	25,291	1,503	+1582.7
PSA Group	11.5	12.1	134,651	151,195	-10.9	11.1	12.0	716,739	827,033	-13.3
PEUGEOT	6.2	6.4	72,326	80,040	-9.6	6.1	6.4	392,449	442,351	-11.3
CITROEN	5.3	5.7	62,325	71,155	-12.4	5.0	5.6	324,290	384,682	-15.7
RENAULT Group	9.9	9.2	116,087	115,029	+0.9	8.6	8.5	555,467	583,193	-4.8
RENAULT	7.4	7.2	87,243	90,244	-3.3	6.4	6.7	411,211	460,153	-10.6
DACIA	2.5	2.0	28,844	24,785	+16.4	2.2	1.8	144,256	123,040	+17.2
GM Group	8.4	8.8	98,951	109,868	-9.9	7.9	8.3	511,247	573,618	-10.9
OPEL/VAUXHALL	7.1	7.2	83,883	90,365	-7.2	6.8	6.8	436,493	468,298	-6.8
CHEVROLET	1.3	1.6	15,007	19,442	-22.8	1.2	1.5	74,523	105,038	-29.1
GM (US)	0.0	0.0	61	61	+0.0	0.0	0.0	231	282	-18.1
FORD	7.7	6.8	90,629	84,795	+6.9	7.4	7.7	478,584	531,087	-9.9
FIAT Group	5.9	6.4	69,027	79,892	-13.6	6.4	6.6	409,142	456,060	-10.3
FIAT	4.6	4.6	54,351	57,798	-6.0	4.9	4.8	318,065	327,580	-2.9
LANCIA/CHRYSLER	0.6	0.8	6,478	9,695	-33.2	0.6	0.8	41,132	56,100	-26.7
ALFA ROMEO	0.5	0.7	5,902	8,954	-34.1	0.6	0.8	36,170	54,059	-33.1
JEEP	0.2	0.2	1,850	2,724	-32.1	0.2	0.2	11,317	15,169	-25.4
Others (2)	0.0	0.1	446	721	-38.1	0.0	0.0	2,458	3,152	-22.0
BMW Group	6.5	6.6	76,463	82,860	-7.7	6.3	6.1	407,275	421,480	-3.4
BMW	5.1	5.2	59,867	64,878	-7.7	5.1	4.9	328,057	337,335	-2.8
MINI	1.4	1.4	16,596	17,982	-7.7	1.2	1.2	79,218	84,145	-5.9
DAIMLER	5.5	5.1	64,839	64,466	+0.6	5.5	5.1	356,560	349,312	+2.1
MERCEDES	5.0	4.6	58,866	57,730	+2.0	5.0	4.5	320,359	309,544	+3.5
SMART	0.5	0.5	5,973	6,736	-11.3	0.6	0.6	36,201	39,768	-9.0
TOYOTA Group	4.0	4.0	46,819	49,758	-5.9	4.2	4.3	271,387	294,831	-8.0
TOYOTA	3.8	3.8	45,031	47,162	-4.5	4.1	4.0	261,003	279,262	-6.5
LEXUS	0.2	0.2	1,788	2,596	-31.1	0.2	0.2	10,384	15,569	-33.3
NISSAN	3.3	3.5	38,986	44,335	-12.1	3.5	3.5	226,829	239,373	-5.2
HYUNDAI	3.5	3.6	41,027	44,710	-8.2	3.5	3.4	223,594	231,997	-3.6
KIA	2.7	2.7	32,309	33,699	-4.1	2.7	2.5	175,453	173,232	+1.3
VOLVO CAR CORP.	1.6	1.8	19,264	22,477	-14.3	1.7	1.8	111,850	125,540	-10.9
HONDA	1.1	1.1	12,645	14,144	-10.6	1.2	1.1	78,077	72,555	+7.6
SUZUKI	1.1	1.2	12,974	15,033	-13.7	1.2	1.2	77,224	86,177	-10.4
MAZDA	1.1	1.1	13,228	13,369	-1.1	1.2	1.0	74,419	70,581	+5.4
JAGUAR LAND ROVER	0.9	0.9	10,969	10,869	+0.9	1.2	1.0	74,130	66,829	+10.9
LAND ROVER	0.7	0.7	8,669	8,673	-0.0	0.9	0.8	59,306	54,239	+9.3
JAGUAR	0.2	0.2	2,300	2,196	+4.7	0.2	0.2	14,824	12,590	+17.7
MITSUBISHI	0.5	0.5	5,959	6,196	-3.8	0.6	0.6	39,078	44,010	-11.2
OTHER**	0.3	0.9	3,632	11,269	-67.8	0.8	1.3	50,919	89,187	-42.9

(1) VW Group: VW 'other' include Bentley, Bugatti, Lamborghini, and since Aug '12 Porsche

(2) FIAT Group: FIAT 'other' include Dodge, Ferrari, Maserati

(*) data for Malta n.a.

(**) ACEA estimates

For further information, please contact:

Ms. Quynh-Nhu Huynh - Director Economics & Statistics

E-mail: qh@acea.be - Tel. (32) 2 738 73 55